

PROFILES  
AND ACCESSORIES FOR  
CABLES MANAGEMENT  
AND TERMINAL BLOCK

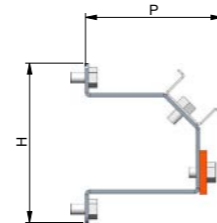
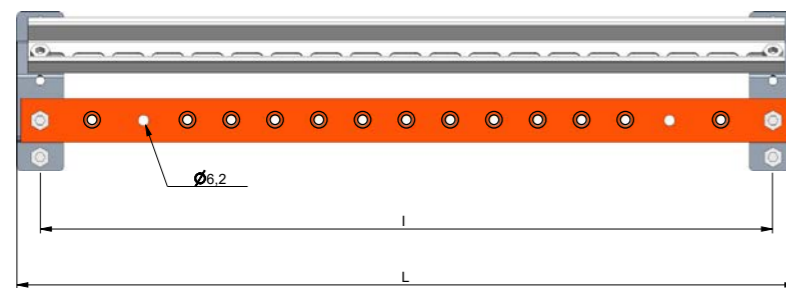


Alcu<sup>®</sup>  
SYSTEM

# BRACKETS FOR HORIZONTAL TERMINAL BLOCK AND EARTH BAR

## BRACKETS FOR HORIZONTAL TERMINAL BLOCK EQUIPPED WITH COPPER EARTH BAR

Kit consisting of two brackets for terminal block equipped with copper earth bar



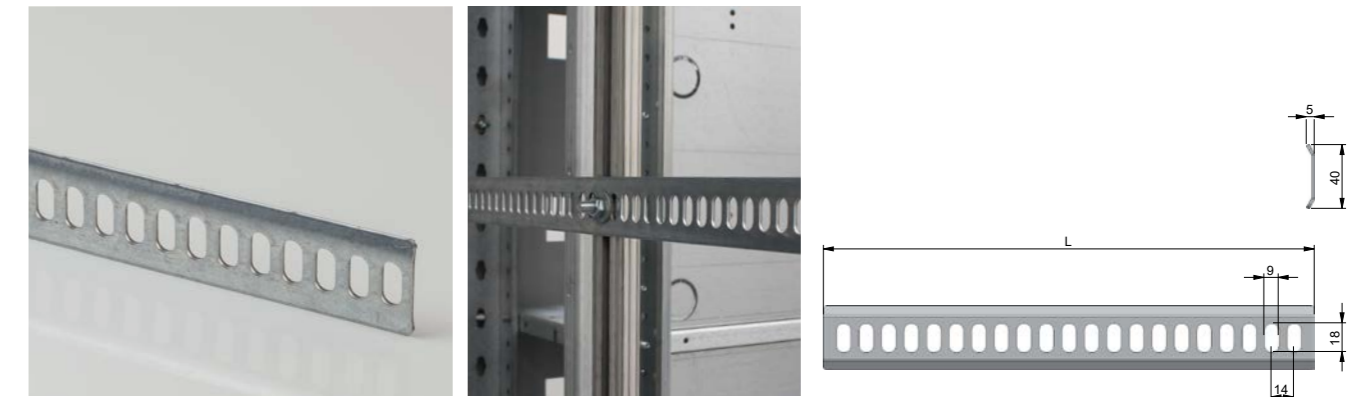
PRODUCT CODE	PACKAGE CONTENT	WEIGHT (KG)	L (MM)	H (MM)	P (MM)	I (MM) POLE-CENTER DISTANCE BETWEEN HOLES (MM)	COPPER BAR CROSS SECTION
A107PE16/C	1	0,94	445	91	78	418	25x4
A107PE20/C	1	1,08	445	91	78	418	30x4
A108PE16/C	1	1,13	640	91	78	594	25x4
A108PE20/C	1	1,1	640	91	78	594	30x4
A109PE16/C	1	1,15	645	91	78	618	25x4
A109PE20/C	1	1,3	645	91	78	618	30x4
A110PE16/C	1	1,36	821	91	78	794	25x4
A110PE20/C	1	1,36	821	91	78	794	30x4

Code	Distance between holes	Length	Height	number of		In (A)
				Inputs	Outputs	
A107PE16/C	25	440	25	2xØ6,2	13xM6	16
A107PE20/C	25	440	30	2xØ6,2	13xM6	20
A108PE16/C	25	640	25	2xØ6,2	21xM6	16
A108PE20/C	25	640	30	2xØ6,2	21xM6	20
A109PE16/C	25	640	25	2xØ6,2	21xM6	16
A109PE20/C	25	640	30	2xØ6,2	21xM6	20
A110PE16/C	25	794	25	2xØ6,2	28xM6	16
A110PE20/C	25	794	30	2xØ6,2	28xM6	20

# SLOTTED BRACKET FOR CABLES

## SLOTTED BRACKET FOR CABLES L=2000

Slotted bracket (slots 9x18, bracket length= 2000 mm)



PRODUCT CODE	PACKAGE CONTENT	WEIGHT (KG)	L (MM)
2/2023/C	10	15	2000

## SLOTTED BRACKET FOR CABLES L=2000 (HEAVY-DUTY APPLICATIONS)

Slotted bracket for heavy-duty applications (slots 9x18, bracket length= 2000 mm)



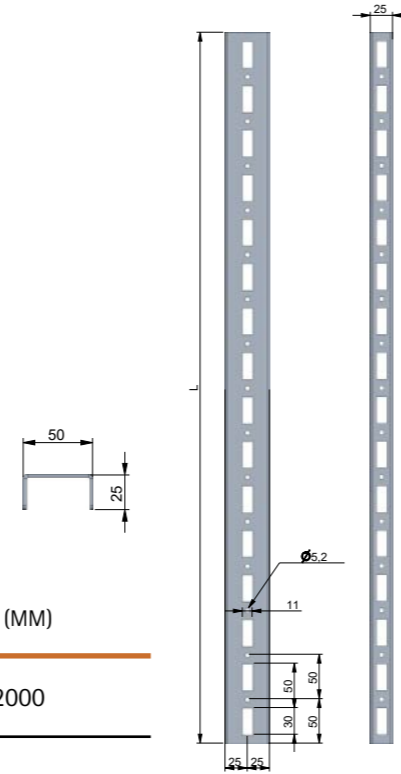
PRODUCT CODE	PACKAGE CONTENT	WEIGHT (KG)	L (MM)
A20PWC/C	10	15,60	2000



# UNIVERSAL SHEET METAL PROFILES

## UNIVERSAL SHEET METAL PROFILES

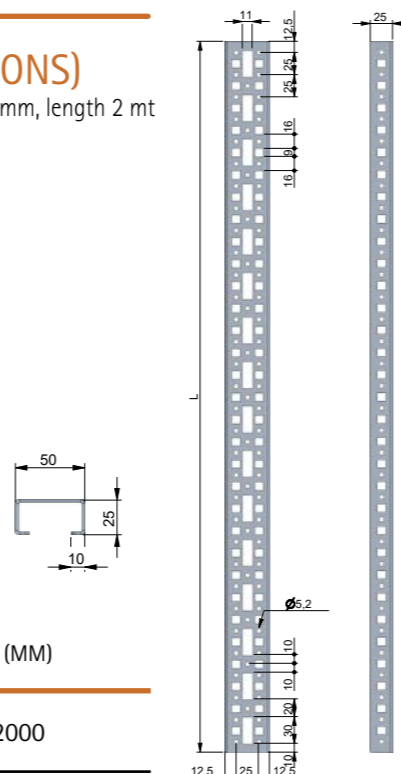
Universal profile 50x25



PRODUCT CODE	PACKAGE CONTENT	WEIGHT (KG)	H (MM)
PU5020/C	10	11	2000

## UNIVERSAL PROFILE 50X25X10 (HEAVY-DUTY APPLICATIONS)

Sheet metal universal profile for heavy-duty applications. Dimensions 50x25x10, thickness 25/10 mm, length 2 mt

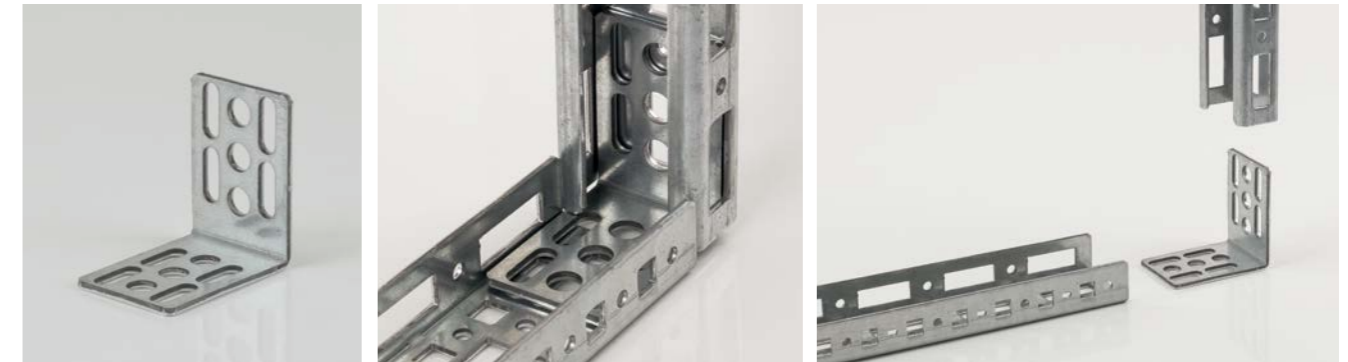


PRODUCT CODE	PACKAGE CONTENT	WEIGHT (KG)	H (MM)
PU5020R/C	10	14	2000

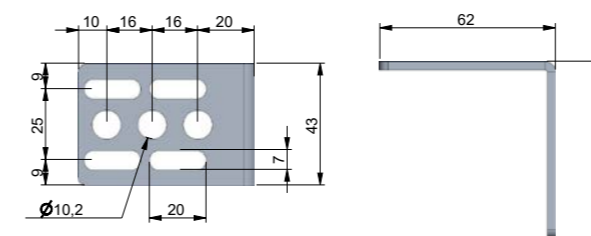
# BRACKETS AND ACCESSORIES

## BRACKETS FOR UNIVERSAL PROFILES

Universal profiles dimensions 50x50, thickness 25/10 mm



PRODUCT CODE	PACKAGE CONTENT	WEIGHT (KG)
UST/C	20	1,9



## THREAD ROLLING SCREWS

Hexagon head thread rolling screws M6x10



PRODUCT CODE	PACKAGE CONTENT	WEIGHT (KG)
4/C6610/C	100	4

PROFILES AND ACCESSORIES FOR TERMINAL BLOCK AND CABLES MANAGEMENT

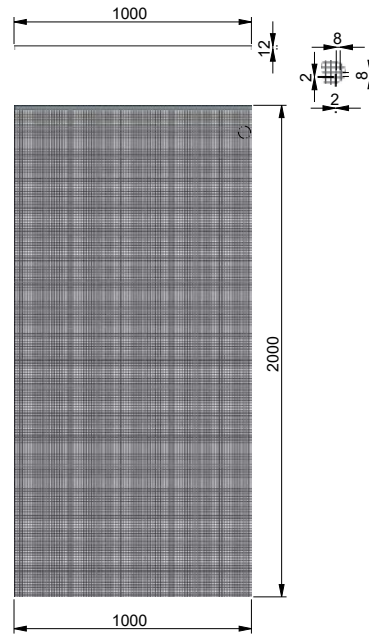
PROFILES AND ACCESSORIES FOR TERMINAL BLOCK AND CABLES MANAGEMENT



# PARTITIONS

## PARTITIONS

Zinc-plated metal mesh partition (hole 8 mm), dimensions 2000x1000, thickness 1,5 mm



 PRODUCT CODE	 PACKAGE CONTENT	 WEIGHT (KG)	H x W x THK(mm)
RQ/152010/C	5	13	2000x1000x1,5